

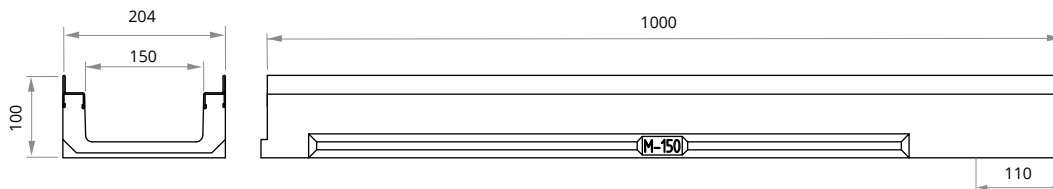
Load Class
up to C250
EN-1433 Standard

M150K

ULMA Linear Drainage Channel type M150K: External width 204 mm; Internal width 150 mm and overall height 100 mm to collect rainwater in 1 metre long units. Integrated galvanised steel* edges for lateral protection. Locking system consists of 2 screws per metre.



*Also available with stainless steel edge protection.

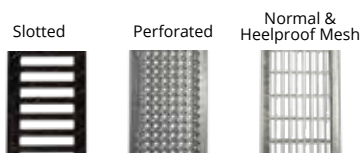


CHANNEL

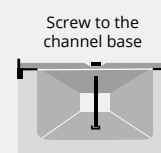
Code Channel	L mm	H mm	Width mm		Ø Outlet* mm		Hydraul. Section cm ²	Pcs. pallet	Weight Kg	Qref l/s
			Ext.	Int.	Vert.	Hor.				
M150K	1000	100	204	150	160	-	89	60	18,2	2,5

* Vertical outlets on order

GRATING



HOW TO FIX



Material	Design	Load	Code	L mm	Width mm	Opening mm	Weight Kg	Intake area cm ² /ml	Code	Units ml
DUCTILE IRON	SLOTTED	C250	FNX150KCCM	500	195	14	5,2	720	TEF880	2
GALVANISED STEEL	PERFORATED	A15	GP150KCA	1000	195	Ø5	4,1	196	TNPC890	2
	MESH	B125	GEX150KCB	1000	195	30 x 20	5,6	1413	TEF880	2
	HEELPROOF MESH*	B125	GEHX150KCB	1000	195	30 x 10	6,6	1133	TEF880	2
STAINLESS STEEL	PERFORATED	A15	IP150KCA	1000	195	Ø5	4,1	794	TXNPC890	2

* Available in stainless steel, consult design

CLOSED END CAP

Code	
T150MKC	

